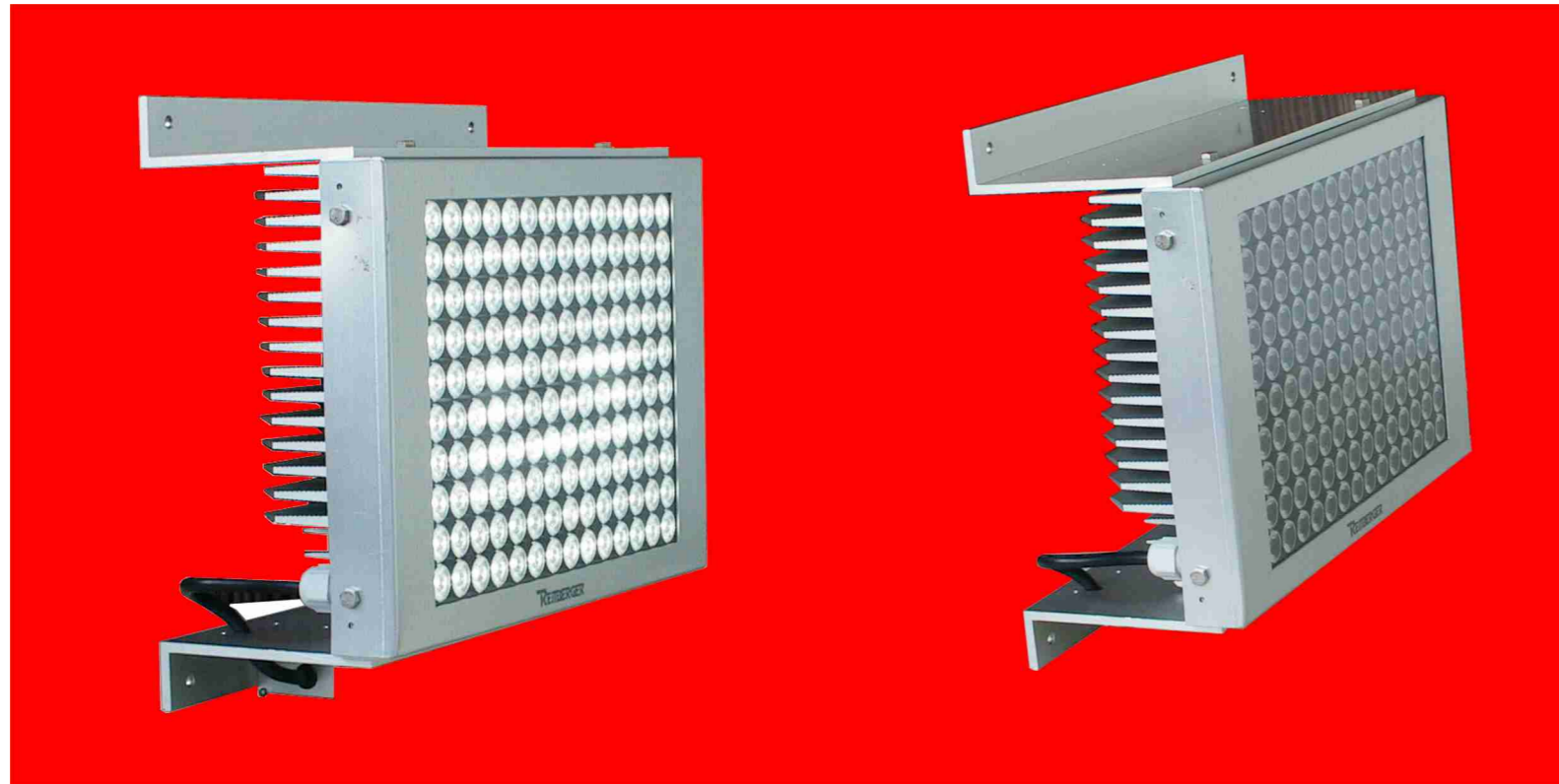


# LED-Spotlight series **LT 170/340**



## LED-Spotlight: Series IP-LT 170/340

Technical Data	LT 170	LT 340
Application areas:	Outdoor and Indoor	
Technology:	LED	
Capacity in Watt:	170	340
Lightflux in Lumen:	14000	On inquiry
Colour temperature:	5.250 - 6250 K at Cool white	
Angle of radiation:	1	On inquiry; Dependent on type
Lighting intensity (Lux) 6 m distance:	200 to 1400, dependent on the angle of radiation	
Power supply:	230VAC	
Temperature range:	-25 bis + 50°C	
LED durability:	Approx. 60.000h	
Dimensions in mm:	400x265x135	On inquiry
Type of protection:	IP65	
Weight in kg:	20	On inquiry

## LED-Spotlight: Series IP-LT 170/340

### General

The LED spotlights of the series LT 170/340 are conceived for the rugged industry reality. All versions have IP65 type of protection and are developed especially with the view on 7/24 operation. Typical application fields are: Floodlighting of buildings or advertising spaces, illumination of terminals underpasses, platforms, stations, petrol stations etc.

The LED spotlights of the series LT 170/340 are deliverable in the following types::

- 170 and 340 Watt
- The 170 and 340 Watt version offers the possibility to select between different angles of radiation
- Luminous colour CW (Cool white) and WW ( Warm white )
- Basically the power supply is 230VAC at all types

### Advantages:

- Considerable energy savings
- Clear sinking of the maintenance costs
- Long-lasting LED (approx. 60.000h)
- White light for a better colour recognition
- Fixed 230V power supply module
- Low heat generation
- Absolutely hum- and flickering free
- No maintenance required
- Free of contaminates (no special waste, no mercury, approx. 80% lesser CO<sub>2</sub> )
- High shock and vibration resistance

### Order numbers

